

# Cooper Creek Access

## Ten Year Area Management Plan

FY 2014-2023



*Jessie D. Allen*

Forestry Division Chief

*4-7-14*

Date

## Cooper Creek Access Management Plan Approval Page

### PLANNING TEAM

#### TRI-LAKES

Shane Bush, Fisheries Management Biologist

Greg Cassell, Resource Forester

Charles Nofsinger, Conservation Agent

Brad Jump, Wildlife Management Biologist

John Miller, Interpretive Center Manager

Andy Humble, Private Lands Conservationist

Rhonda Rimer, Natural History Biologist

### SOUTHWEST REGION

RCT Chair

  
Signature

March 24, 2014  
Date

### FORESTRY DIVISION

Forestry Management Chief

  
Signature

4-7-14  
Date

## OVERVIEW

- **Official Area Name:** Cooper Creek Access, #9901
- **Year of Initial Acquisition:** 1998
- **Acreage:** 39.43
- **County:** Taney
- **Division with Administrative Responsibility:** Forestry, Southwest Region
- **Division with Maintenance Responsibility:** Forestry, Southwest Region
- **Statements of Purpose:**

### A. Strategic Direction

This facility was developed to provide improved public access and angling opportunities to Lake Taneycomo and make it accessible to all anglers. Cooper Creek Access provides access to Lake Taneycomo for resource users and provides healthy riparian corridors and bank vegetation. All parking lots and roads should be designed and maintained to adequately handle ingress, egress and parking for public use, including being disabled accessible.

### B. Desired Future Condition

The desired future condition of Cooper Creek Access is an accessible access to Lake Taneycomo with forest/woodland habitats.

### C. Federal Aid Statement

N/A

## GENERAL INFORMATION AND CONDITIONS

### I. Special Considerations

- A. **Priority Areas:** Trout stream.
- B. **Natural Area:** None

### II. Important Natural Features and Resources

- A. **Species of Conservation Concern:** Species of conservation concern are known from this area. Area Managers should consult the Natural Heritage Database annually and review all management activities with the Natural History Biologist.
- B. **Caves:**None
- C. **Springs:**None
- D. **Other:**None

### III. Existing Infrastructure

All infrastructures are disabled accessible:

- Concrete boat ramp: 1
- Parking Lot: 1
- Privy: 1

- Courtesy Dock: 1
- Fishing Dock: 1

#### IV. Area Restrictions or Limitations

- A. Deed Restrictions or ownership considerations:** Leased from Empire District Electric Company.
- B. Federal Interest:** Federal funds may also be used in the management of this land. Fish and wildlife agencies may not allow recreational activities and related facilities that would interfere with the purpose for which the State is managing the land. Other uses may be acceptable and must be assessed in each specific situation.
- C. Easements:** Road easement between Robert and Patricia Cameron and Empire District Electric Company.
- D. Cultural resources findings:** Yes, records kept with the MDC Environmental Compliance Specialist. Managers should follow Best Management Practices for Cultural Resources found in the MDC Resource Policy Manual.
- E. Hazards and hazardous materials:** None observed
- F. Endangered Species:** None observed
- G. Boundary Issues:** None

### MANAGEMENT CONSIDERATIONS

#### V. Terrestrial Resource Management Considerations

##### **Challenges and Opportunities:**

- 1) This lake access area is 39.43 acres in size. It is leased from Empire District Electric Company for a period of 25 years. Other than existing constructed facilities, it is made up of a mix of old fields, woodland, and bottomland forest along Cooper Creek and Lake Taneycomo. A heron rookery is located within the riparian zone of Cooper Creek which flows into Lake Taneycomo near the main parking lot. Hunting is not allowed on the area.
- 2) Monitoring forest stands for insects and diseases such as emerald ash borer (*Agrilus planipennis* Fairmaire), gypsy moth (*Lymantria dispar*), thousand cankers disease (the fungus *Geosmithi amorbida*) and the walnut twig beetle (*Pityophthorus juglandi*) will be a challenge, should they occur the future.
- 3) Control of exotic and invasive species on the area such as sericea lespedeza (*Lespedeza cuneata*), musk thistle (*Carduus nutans*), tall fescue (*Festuca arundinacea*), Johnson grass (*Sorghum halepense*), reed canary grass (*Phalaris arundinacea*), and Eastern red cedar (*Juniperus virginiana*) will be an ongoing challenge.

**Management Objective 1:** (Forestry) Forest lands will be managed under the category of Urban and Intense Recreation Management.

**Strategy 1:** Protect the riparian zone along Cooper Creek and Lake Taneycomo as well as the heron rookery within it.

**Management Objective 2:** (Forestry) Monitor forest for insect and diseases outbreaks.

**Strategy 1:** The Resource Forester, Resource Technician and Resource Assistant will monitor forested stands for insect and disease outbreaks as regular visits are made for maintenance work.

**Strategy 2:** Treat insect and disease outbreaks as recommended by the Forest Health staff.

**Management Objective 3:** (Forestry) Monitor area for exotic and invasive species.

**Strategy 1:** The Resource Forester, Resource Technician and Resource Assistant will monitor the area for exotic and/or invasive species as regular visits are made for maintenance work.

**Strategy 2:** Treat to control or eradicate populations of undesirable exotic or invasive species. This could include the use of mechanical, chemical and biological treatments.

## VI. Aquatic Resource Management Considerations

### **Challenges and Opportunities:**

- 1) Aquatic invasive species can have a detrimental impact to the fishery of Lake Taneycomo.

**Management Objective 1:** (Fisheries) Manage the spread of exotic and/or invasive aquatic life.

**Strategy 1:** Inform area users through signage about the hazards and prevention of spreading aquatic invasive species.

**Management Objective 2:** (Fisheries and Forestry) Maintain the water quality of runoff from this area.

**Strategy 1:** Encourage and maintain healthy riparian corridors and stream bank vegetation in non-infrastructure areas.

**Strategy 2:** Address accelerated streambank erosion along Cooper Creek and Lake Taneycomo frontage.

## **VII. Public Use Management Considerations**

### **Challenges and Opportunities:**

- 1) This fishing access receives heavy use by the public. Frequent maintenance of the parking lot, privy, fishing and courtesy docks and entrance road is required. High flow water releases from Table Rock Dam can cause flooding downstream along Lake Taneycomo. This flooding leaves large amounts of silt and debris on the sidewalks and the Americans with Disabilities Act (ADA) walking ramp that leads to the floating fishing and courtesy docks.

**Management Objective 1:** (Protection) Ensure proper use by all users.

**Strategy 1:** Periodically patrol this access to ensure compliance with area regulations.

**Management Objective 2:** (Forestry and Fisheries) Encourage anglers and boaters to continue to use this access.

**Strategy 1:** Maintain infrastructure and facilities twice per week.

**Management Objective 3:** (Forestry) Minimize disruption of public use, during and immediately following large water releases from Table Rock Dam. Provide for public safety during flood events.

**Strategy 1:** Close facilities such as ADA walk ramp, fishing and courtesy docks and boat ramp if necessary to provide for public safety during flood events.

**Strategy 2:** Post notification of these closures on the public website and on the bulletin board at the site, during flood events.

**Strategy 3:** Clean flood debris from facilities as quickly as possible within the first month after the water recedes.

## **VIII. Administrative Considerations**

### **Challenges and Opportunities:**

- 1) Area boundaries need regular maintenance to prevent trespass.

**Administrative Management Objective 1:** (Forestry) Prevent encroachment and trespass.

**Strategy 1:** Resource Assistant will annually maintain boundaries by replacing boundary signs and painting boundaries with blue paint.

## **MANAGEMENT TIMETABLE**

All strategies for this management plan are considered ongoing.

## APPENDICES

### Area Background:

Cooper Creek Access is a fishing access facility on Lake Taneycomo. It has a concrete boat ramp, a courtesy dock, a covered fishing dock, a large parking lot, and a privy. All facilities on this area are disabled accessible.

Empire District Electric Company (EDEC) owns the land on and around Cooper Creek Access. The Missouri Department of Conservation entered into an agreement with EDEC on June 15, 1998 to construct and maintain Cooper Creek Access for a period of 25 years. The area was opened to public use at a dedication ceremony on May 23, 2000.

### Current Land and Water Types

Land/Water Type	Acres	Miles	% of Area
Bottomland/ Riparian Forest	14.0		36
Woodland	8.4		21
Old Fields/Upland Fields	7.1		18
Glade	5.5		14
Parking Lot/ Road ROW/ Powerline ROW	4.4		11
<b>Total</b>	<b>39.4</b>		<b>100</b>
Stream Frontage		0.371	

### Public Input Summary:

The draft Cooper Creek Access Area Management Plan was available for a public comment period January 1 – 31, 2014. The Missouri Department of Conservation received no comments during this time period.

### References:

Missouri Department of Conservation Online Conservation Atlas

### Maps:

- Figure 1 – Cooper Creek Access Area Map
- Figure 2 – Cooper Creek Access Vicinity Map
- Figure 3 – Aerial Photograph
- Figure 4 – Features and Facilities

Figure 1 – Cooper Creek Access Area Map

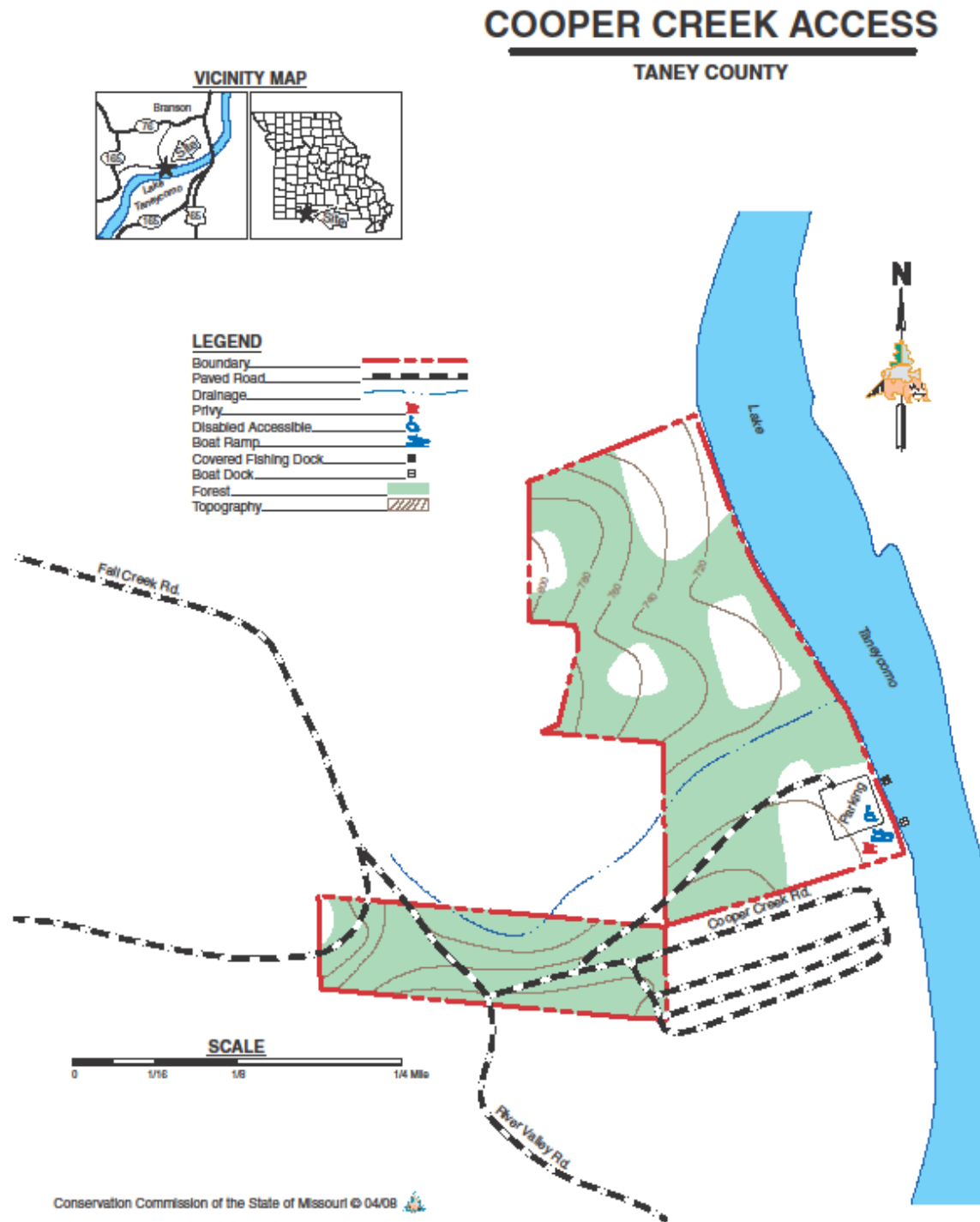




Figure 2 – Cooper Creek Access Vicinity Map

Figure 1. Cooper Creek Access Vicinity Map

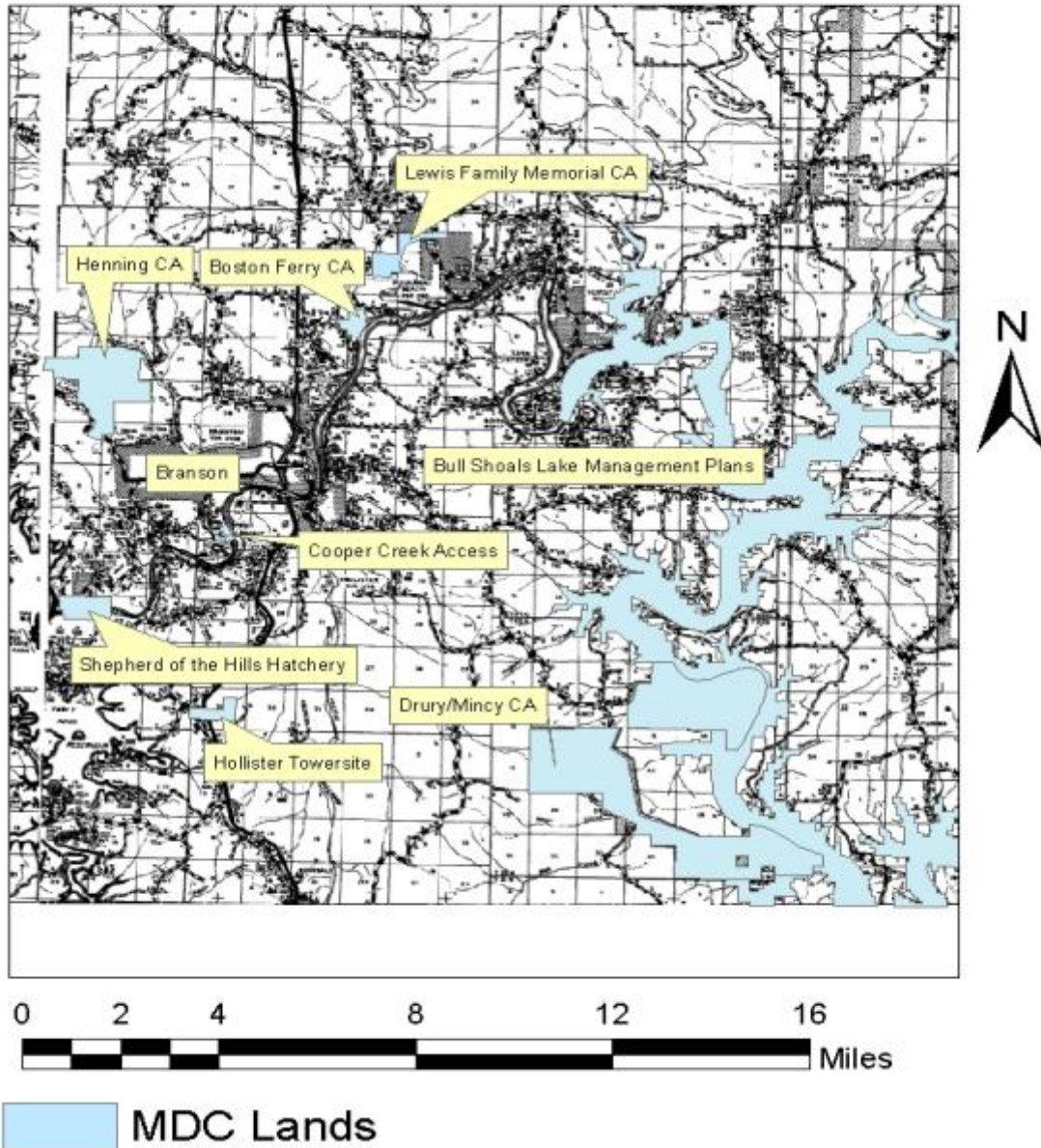


Figure 3 – Aerial Photograph

Figure 3. Cooper Creek Access  
Aerial Photograph

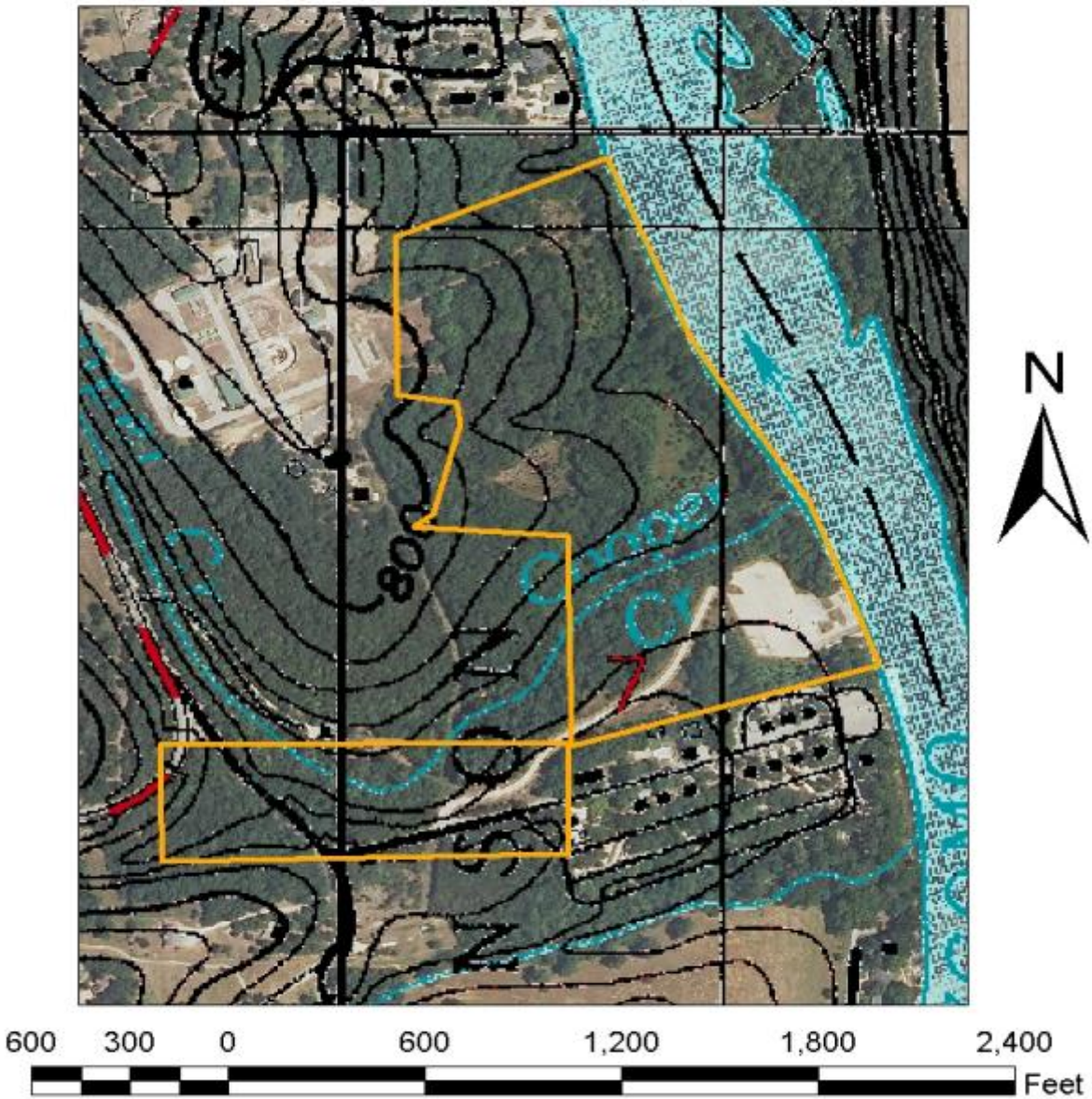


Figure 4 – Features and Facilities

Figure 4. Cooper Creek Access Features and Facilities

